

# NAVARA OFFROAD

Australian Made Off Road Accessories

**Description –** Winch Cradle  
**Part Number –** D22WC-0815  
**Application –** Nissan D22 Navara 06/2001 To 07/2015  
Fitted with Nissan genuine alloy bullbar

**Tools Required –**

Phillips Head Screwdriver	Electric Drill
Angle grinder or Hacksaw	Drill Bit Set
Side Cutters	½ Inch Socket
Square nose Pliers	½ Inch Spanner
10mm Spanner	
17mm & 19mm Socket and Ratchet.	
Flat File	

**Kit Content -**

1 x Winch Cradle	4 x 5/16 * 1 ¾ ” Bolts
4 x M12*50 Bolt	4 x 5/16 Nuts
4 x M12 Nuts	4 x 5/16 Spring Washers
4 x 12mm Spring Washer	8 x 5/16 Flat Washers
8 x 12mm Flat Washer	



From underneath the vehicle disconnect the wiring at the back of the indicators in the bullbar.



Remove the four screws holding the air guide to the bullbar.



Remove the 4 bolts (two either side) on the inside of the bullbar securing the bullbar to the chassis brackets.

Remove the bullbar



Remove four bolts securing the air guide to the chassis brackets. Remove the air guide and discard.



Remove the air guide tab and discard.



Position the cradle between the chassis brackets and align the four smaller mounting holes with the air guide mounting holes in the chassis brackets. Secure the cradle in place using the 4 smaller nuts, bolts, spring washers and flat washers.

**Note:** It may be necessary to clean out the air guide holes in the chassis brackets using an 8mm drill bit.



Using a ½ inch drill bit, and the upper mounting holes in the chassis brackets as a guide, make a small indent in the chassis bracket to locate the centre of the hole.

Fit the larger nuts, bolts, flat washers and spring washers to secure the cradle in place.

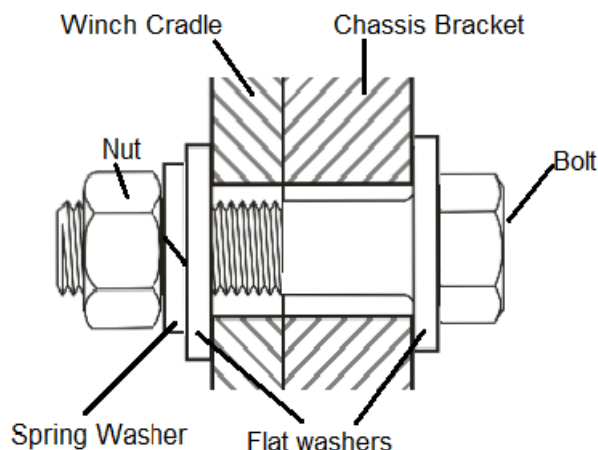


Using a 4mm drill bit drill out all four holes in the chassis brackets using the indent from the previous step as a guide. Increase the hole sizes to 12.5mm using a 12.5mm drill bit.

**Note:** It may be easier to increase the hole size gradually using a series of drill bits up to 12.5mm e.g. 6mm, 8mm, 10mm then 12.5mm



Secure the winch cradle to the chassis brackets using the M12 hardware.



### Mounting the winch

Warn XD9000/M8000

Remove the winch from the box and place on a flat surface with the mounting holes facing down.

Ensure the clutch handle is in the correct position for ease of operation as shown. If the handle requires rotating, undo and remove all capped head screws from gearbox end. Gently raise the gearbox just enough to rotate to correct position. **Do not completely remove the gearbox so as not to damage to the gasket.** Refit all capped head screws and tighten.

**IMPORTANT!**  
**WINCH CABLE SPOOLS FROM BOTTOM OF WINCH**



Ensure the motor terminals are in the upward position as shown. If the motor requires rotating remove the two bolts securing the motor to the housing and rotate to the correct position. Refit the bolts. Take the earth lead and securing bolt supplied with the winch and secure the earth lead to the underside of the motor.



Using the four bolts supplied with the winch, secure the winch to the cradle

Ensure the wire rope is exiting through the opening in the front plate.

**Note: Check and ensure that the winch is not in contact with the cooling fan. Also ensure there is clearance between the cradle and the power steering cooler lines.**



Using the nuts & bolts supplied with the winch, secure the fairlead to the cradle.

**Note: Only tighten bolts finger tight at this point as the fairlead needs to be aligned with the bullbar at a later point.**

Fit the recovery hook supplied with the winch to the end of the wire rope

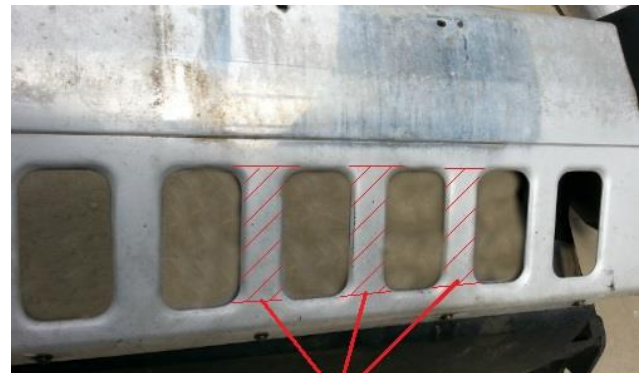


At This point you need to determine the location in which to mount the control box for the winch. There is no set location however some suggestions are behind the bulbar wing (as shown), top pan of bulbar or under bonnet. The location will depend totally on yourself and your requirements.



Using an angle grinder, hacksaw or other aluminium cutting tool, remove the 3 middle ribs in the lower section of the bullbar.

Remove all burs using a file.



**Remove Ribs**

For Installations using a roller fairlead it may be necessary to remove additional material depending on the size of your fairlead.



**Remove For  
Roller Fairlead**

Refit the bullbar to the vehicle and secure using the mounting bolts previously removed. Align bullbar to the body of the vehicle and tighten all mounting bolts.

Position the fairlead central to the opening in the bullbar and tighten the mounting bolts.



Reconnect the indicators in the bullbar.

Test winch for correct operation

